



Comhairle Contae  
Loch Garman  
Wexford  
County Council



## Wexford Town to Rosslare Strand Greenway

### Public Consultation - Route Corridor Options

11th May to 10th June 2022

**Wexford County Council (WCC)** is proposing to develop a greenway between Wexford Town and Rosslare Strand. This is a non-statutory public consultation on the **Route Corridor Options**.

The Project Team seeks feedback from the public and interested parties on the Route Corridor Options we have identified for the scheme.

We would like to hear your views on the **Route Corridor Options** by **10th June 2022**.

## The Need for The Scheme

**WCC is seeking to develop a Greenway as a recreational amenity, sustainable commuter corridor and tourism project from Wexford Town to Rosslare Strand.**

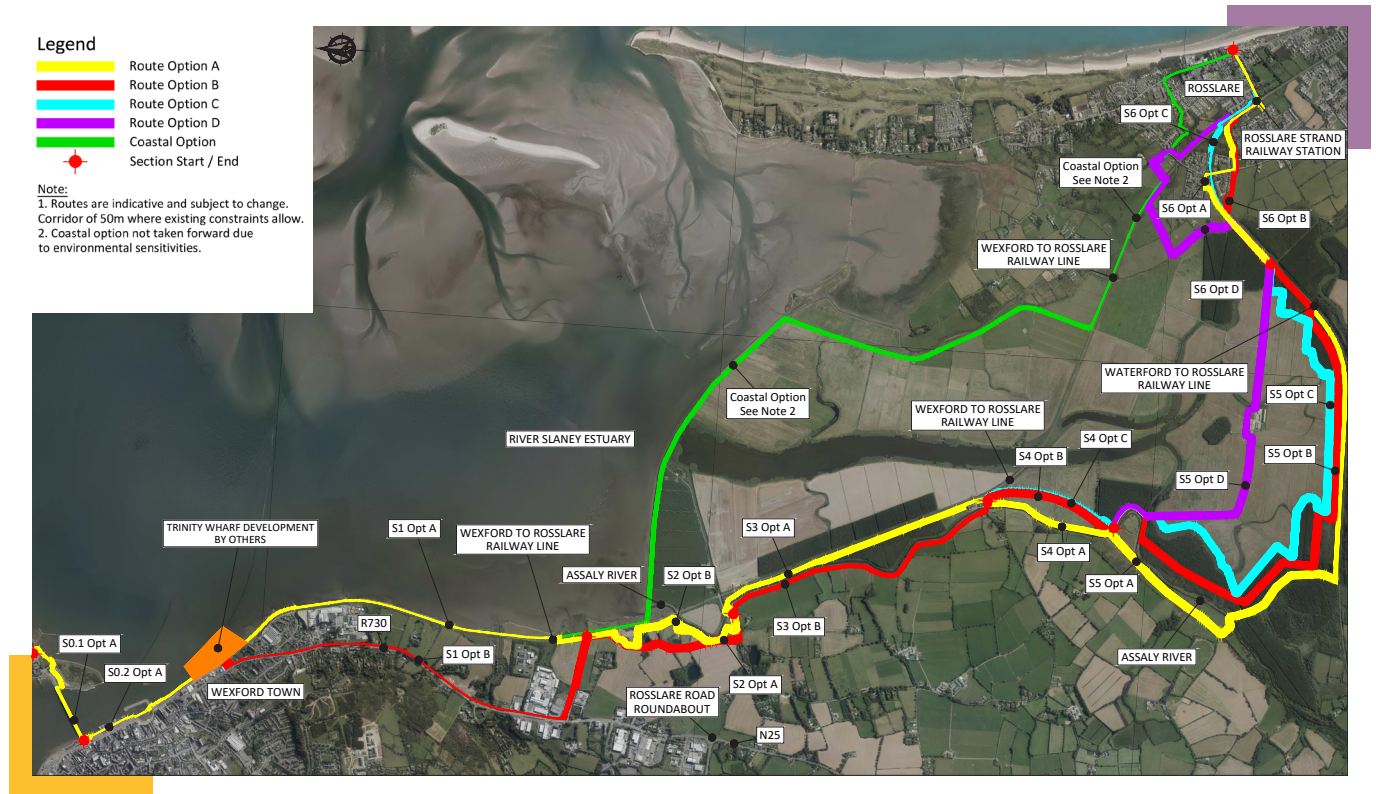
This project forms part of an overall vision and strategy for the development of an integrated network of greenways and blueways, as outdoor recreational amenities, for the South East region and beyond.

This project will seek to attract domestic and international visitors to come, stay in and explore the region. It will connect with existing and planned greenways and blueways, creating a recreational pathway for use by locals and visitors and encouraging and promoting walking and cycling in a safe and controlled environment.

# Route Corridor Options

The **Greenway** is expected to commence in the vicinity of the Ferrybank Caravan and Camping Park, playground and leisure centre extending along Wexford Bridge and Crescent Quay, and tying in with the proposed new urban district development site at Trinity Wharf.

To the south of Trinity Wharf the Greenway is proposed to extend in a southerly direction, terminating at the Rosslare Strand beach car park.



Following on from the **Constraints Study**, a number of **Route Corridor Options** have been developed. Given the length of the overall route, the scheme has been broken into a number of sections for the purpose of the Route Corridor Options identification and assessment, as follows: -

- **Section 0** – Extends between Ferrybank and Trinity Wharf
- **Section 1** – Extends between Trinity Wharf and Drinagh North
- **Section 2** – Extends between Drinagh North and the South Slob Road
- **Section 3** – Extends between the South Slob Road and Killane Little
- **Section 4** – Extends between Killane Little and Drinagh Intake
- **Section 5** – Extends along the Southern Boundary of Drinagh Intake
- **Section 6** - Extends between Drinagh Intake and Rosslare Strand Beach Car Park.

The **Route Corridor Options** presented in this non-statutory public consultation are subject to change based on stakeholder consultation and the further development of these options.

The eventual Route Corridor selected for the overall Greenway may comprise of a combination of any route options presented within the various sections.

A coastal option (Green Route) was also considered but ruled out at an early stage on environmental grounds. The Green Route is shown on the route options maps for completeness.

# What's Happening Now ?

The objective of this **Public Consultation Process** is to invite the members of the public to comment on the proposals. These comments will assist **Wexford County Council** and our Design Team in the development and selection of a Preferred Route Corridor for the Greenway between Wexford Town to Rosslare Strand.

## Have Your Say...

The **Project Team** would like to hear your views on the **Route Corridor Options** to inform the selection of the final route of the greenway.

**We welcome your feedback on any issues or information relating to the corridors, which you think should be considered by the project team in selecting a preferred route corridor.**

**WCC** will hold two information events, with route maps on display and WCC staff in attendance to answer any questions, as follows:


- **Talbot Hotel, Wexford – Wednesday** (11th May 2022 from 15.00 – 19.30)
- **Rosslare Strand Community Centre – Thursday** (12th May 2022 from 15.00 – 19.30)

**An online consultation process will commence on 11th May, running until 10th June 2022.**

The link below will provide you with the most up to date information on the project, including:

- **This Public Consultation Brochure**
- **A series of maps showing the Route Corridor Options; and**
- **An online feedback form.**

### How To Return Your Feedback:

 <https://consult.wexfordcoco.ie/en>

 [specialprojects@wexfordcoco.ie](mailto:specialprojects@wexfordcoco.ie)

 Wexford Town to Rosslare Strand Greenway,  
Senior Executive Engineer,  
Special Projects Office,  
County Hall, Carricklawn,  
Wexford, Y35 WY93

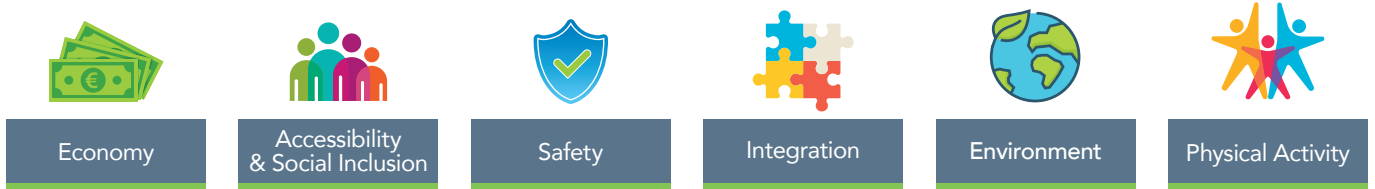
**All feedback should be returned by 10th June 2022**

# Next Steps...

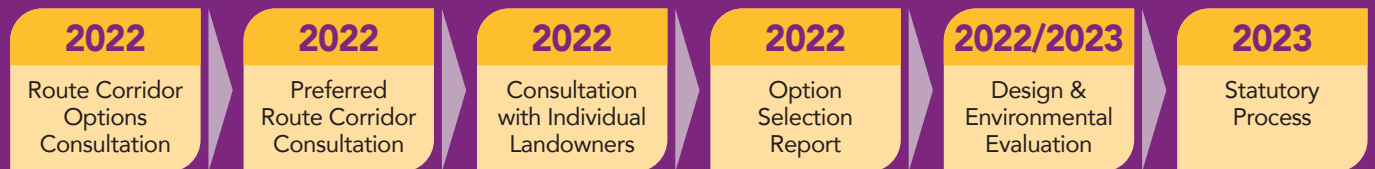


**Comments/information received** at this non-statutory public consultation will be considered by the Project Team as part of the **Option Selection Process**.


**A Preferred Route Corridor** will be selected following assessment of inputs from the public, technical specialists and environmental specialists. The next stage will involve an assessment of all Route Corridor Options under the following criteria:-



## Project Timeline



### Contact Us:

 <https://consult.wexfordcoco.ie/en>

 [specialprojects@wexfordcoco.ie](mailto:specialprojects@wexfordcoco.ie)

